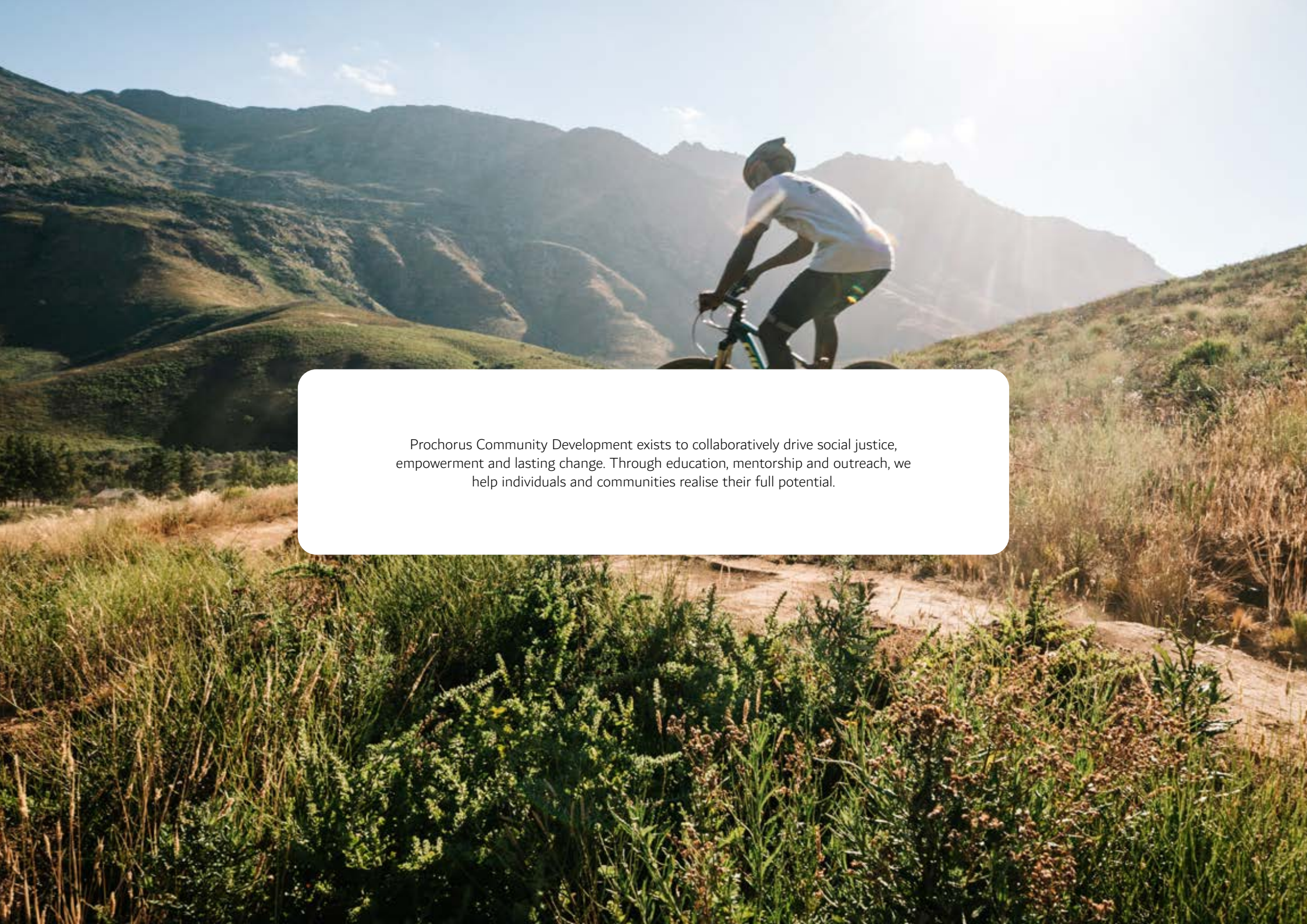




**PROCHORUS**  
COMMUNITY DEVELOPMENT

# Prochorus Community Development Annual Report 2024



Prochorus Community Development exists to collaboratively drive social justice, empowerment and lasting change. Through education, mentorship and outreach, we help individuals and communities realise their full potential.

# Contents

Our Year in Review	4
Who We Are	5
Focus Area: Early Childhood Development	7
Stellenbosch: Siyanda ECD Centre and Little Builders ECD Centre	8
Delft ECD Project	10
Somerset West: Spring of Life	12
Focus Area: Youth Development	13
Stellenbosch: Jonkershoek Aftercare Centre	14
Stellenbosch: Jonkershoek Cycling Project	14
Riebeeck-Kasteel: Dream Again Mentoring	15
Focus Area: Community Welfare	16
De Doorns: Shining Light Project	17
Somerset-West: Storehouse Project	18
Delft: Khanya and Home-based Disability Care	19
Focus Area: Skills Development	20
Stellenbosch: ECD Training	21
Stellenbosch: Jonkershoek Bike Mechanic Skills Training	21
Financial Matters	22
Our Donors	23



# Our Year in Review



## Reflections on 2024 from Our Managing Director

As we reflect on 2024, we are filled with gratitude for a year of transformation and growth. Every milestone we reached was made possible by the unwavering support of our staff, volunteers, donors and partners. Together, we've lived out the mission of Prochorus Community Development: to uplift communities, nurture potential and bring lasting change.

This year brought growth across all our projects, from early childhood education to youth mentorship and sports development. Participation increased and lives were truly changed. In our education programmes, children showed strong progress in school readiness, literacy and personal growth. With structured assessments and individual learning paths, many gained confidence and a readiness to thrive.

Youth programmes empowered young people through mentorship and sports (especially cycling), which became a powerful tool for building resilience, teamwork and self-worth. Weekly mentoring offered safe spaces for growth and healing.

Our community outreach also saw a significant impact. Displaced individuals received counselling, discipleship and support, with many taking first steps toward healing and reintegration.

These achievements were made possible by a remarkable community. Our staff worked tirelessly. Volunteers dedicated countless hours to tutoring, mentoring and practical support, laying the groundwork for transformation.

To our donors and partners: thank you. Your generosity resourced our programmes, nourished our children and strengthened our teams. Your belief in us fuels the work we do.

As we look ahead to 2025, we do so with hope and anticipation. We are preparing to expand our impact and deepen the programmes that change lives. With your continued support, we are ready for what's next. Thank you for being part of this journey, whether it's through prayer, giving, serving or simply encouraging. Together, we are building something beautiful: stronger communities, renewed hope and transformed lives.

With deepest gratitude,  
Jan Scannell

# Who We Are

Prochorus Community Development exists to collaboratively achieve social justice and empower individuals and communities. Established in 1996, Prochorus is a registered non-profit (Reg No. 2008/012209/08, NPO No. 086-767-NPO) committed to sustainable programmes that help people reach their full potential, whether it's spiritually, intellectually, physically, socially or emotionally. We partner with local churches to ensure strong volunteer involvement, resource access and project integrity.

## Focus Areas

- Early Childhood Development
- Youth Development
- Skills Development
- Community Welfare

## Our Mission

We serve disadvantaged communities based on need-assessment studies and available resources. Our focus areas include: Early Childhood Development, Youth Development, Skills Development and Community Welfare, all aimed at empowering individuals and communities.



## Board Members



Gerardus Adema  
**Board Chairman**



Jan Scannell  
**Managing Director**



Hanno Oostenbrink  
**Secretary**



Nikki Titus  
**Director**

## Locations

### Prochorus Branches | 5 in the Western Cape

This local branch is established in a designated area and is managed by an area manager who is either employed by or volunteers with Prochorus.

### Partner Projects | 2 Nation Wide

These are projects that are empowered by Prochorus through resource assistance. These include our community champions.

Total number of indirect beneficiaries:

2350

Total direct beneficiaries:

335

- Stellenbosch
- Delft
- Somerset West
- Riebeeck-Kasteel
- De Doorns





## Focus Area: Early Childhood Development

At our core, we believe that Early Childhood Development is vital for nurturing future leaders, supporting children's physical, emotional, cognitive, spiritual and social growth. This critical stage lays the foundation for lifelong learning, health and well-being.



## Stellenbosch: Siyanda ECD Centre and Little Builders ECD Centre



Located in Kayamandi and Cloetesville, respectively, Siyanda and Little Builders ECD Centres made significant strides in 2024.

After several years of effort, both centres were successfully registered with the Department of Education for five years (an important milestone in securing long-term impact). Together, they served 64 children between the ages of 3 and 5, preparing them for Grade R and beyond using the Prochorus Early Childhood Development Curriculum.

With support from Akkerfikelela, each child's development was closely tracked throughout the year. Baseline assessments helped shape individual learning journeys, while daily, weekly and monthly outcomes ensured consistent progress. Scheduled and surprise classroom checks ensured high teaching standards were upheld. By year-end, follow-up assessments confirmed meaningful development across key areas.

Weekly library visits and educational outings enriched the learning experience, while consistent nutrition (through Startwell Foundation breakfasts and Rise Against Hunger lunches) supported physical growth. Many children reached healthy weight and height benchmarks while parents reported an improved overall wellness.

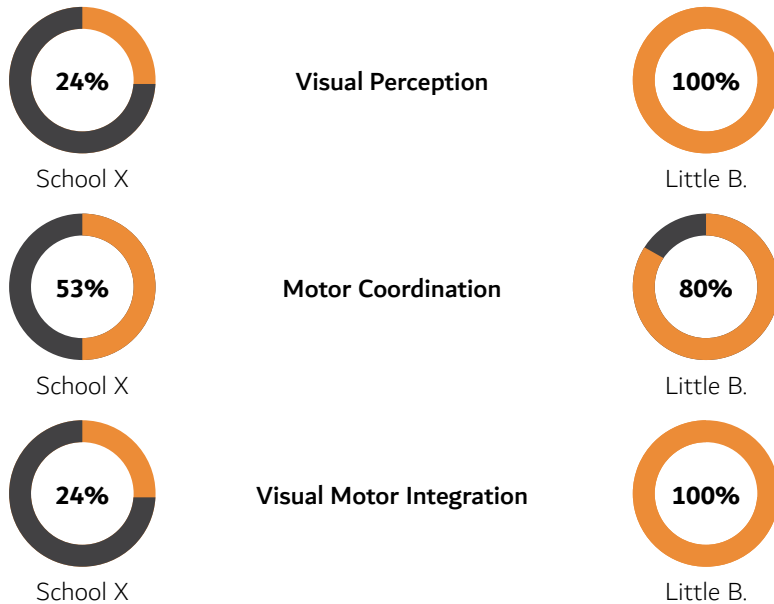
Developmental benchmarks included pencil grip, cutting, motor skills, visual perception and early number and shape concepts. When compared to a peer ECD centre in Cloetesville, Little Builders showed remarkable gains, reflecting the dedication of our teachers and staff.

The collective effort paid off, as children grew not only in skills and confidence, but also in health and joy.

The graphics below highlights the impressive progress our children made this year in colour concepts, number concepts, shape recognition and drawing skills.

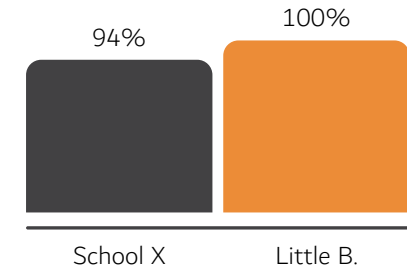
### Beery Standardized Tests

These results from standardized tests are remarkable and will give the children a good foundation for later writing and reading skills.



### Colour Concept

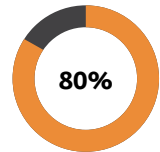
**100%** of the age group could identify colours correctly.



### Number Concept

Number concept is important for math skills.

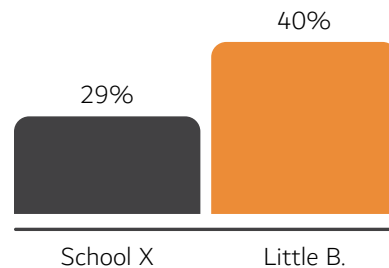
**80% of the age group was able to count from 1-10 correctly.**  
Please note: Only 30% were able to count from 1-10 correctly during 2023.



### Shape Concept

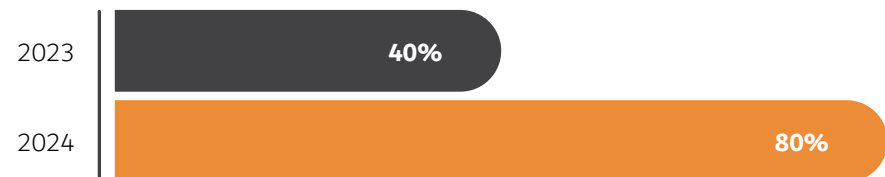
**Needs urgent attention.**

Although showing improvement, only 40% of the age group was able to identify shapes like circle, square, triangle and rectangle.



### Draw a person

Draw a person is the very basic skill of drawing yourself and this forms the foundation for learning shapes and numbers. The improvement in this learning area showed remarkable progress. Well done! 80% of the age group was able to draw a person on an age appropriate level.

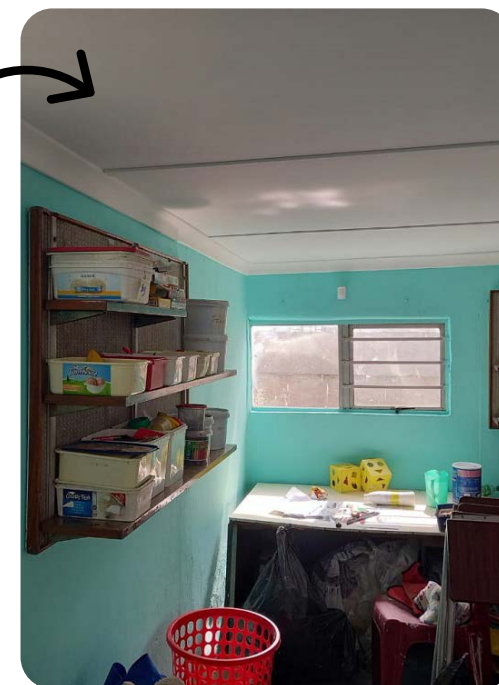


# Delft: Delft ECD Project

Now in its seventh year, the Delft ECD Project continues to support 32 early childhood centres in one of the Western Cape's most underserved communities. We honour the women and men who have opened their homes to create safe, nurturing learning spaces in the face of daily hardship. Over the past year, our growing team has strengthened strategy and logistics, deepened community partnerships and expanded support to nearly 2,000 children. Together, we've shared vital resources, built meaningful relationships and stood alongside courageous principals whose daily efforts shape young lives.

## Key Accomplishments And Milestones

- **Prayer Contract Initiative**  
In July 2024, Shofar Durbanville church members committed to three months of weekly prayers for individual crèches. This spiritual support deepened partnerships, resulted in practical blessings and bridged Durbanville and Delft communities with mutual respect and gratitude.
- **Storm Relief – Roof Project**  
The September 2024 flooding severely damaged 31 crèches, with six roofs requiring urgent repair after leaks and collapses. Two roofs were fixed in 2024, with ongoing efforts to secure funding for ongoing repairs.
- **Amazing Brainz Training Completion**  
In 2024, our second group of ECD centres completed the 25-week AmazingBrainz programme. This training equipped them with essential skills to support healthy brain development and quality early learning in their communities.
- **Continued Professional Development**  
Ongoing mentorship and workshops strengthened principals' leadership and school management skills, fostering sustainable growth and excellence in our crèches.
- **Website Update**  
Our website (which was updated) now features maps, photos and contact details for all participating crèches, improving visibility and efficiency. This digital upgrade has enhanced municipal service delivery and increased applications to the ECD centres.



# Delft: Delft ECD Project

## Annual Camp (November 2024): Mizpah camp

From 15-17 November, we gathered for our 6th annual Delft Principals Camp at Mizpah – a time of refreshing. Afternoons were slow and filled with poolside conversations, shared laughter, and heartfelt connection. As evening approached, anticipation grew for the formal dinner. Dresses were carefully chosen, wigs and heels packed, and outfits pressed with care. The night ended with a chocolate fountain, candyfloss, popcorn, and an unexpected outpouring of dancing and spontaneous joy. By Sunday, we heard testimonies of healing, restored identity, and deep encouragement. Another said that the camp “Gave me strength for the year ahead.”

## We Were Met with the Following Challenges – and Our Responses

- **Structural and Bureaucratic Hurdles:** Registration and facility certifications posed challenges, but mentorship helped principals navigate zoning, fire, and health approvals.
- **Flood Damage (September 2024):** Heavy rains caused extensive structural damage, including roof collapses. Community prayers and support mobilised swiftly to address these urgent needs.



# Somerset West: ECD Support - Spring of Life

Now in its 12th year, Spring of Life continues to be a testament to God's provision and the unwavering dedication of its team. Despite many challenges, 14 Grade R learners graduated in December 2024, and long-time partners from Germany once again brought joy, practical support, and lasting memories to the children through their February visit.

The crèche faced significant hurdles (from fire damage and structural setbacks to leadership transitions), but the team responded with faith, resilience, and hands-on action. Teachers led fundraising for maintenance, navigated registration delays, and continued to care deeply for their community. Plans are in place to expand and strengthen the crèche through collaboration with the Department of Education and improved infrastructure.

## Challenges Faced and How We Responded

- **Classroom Damage and Shortage:**  
A fire, a car accident, and storm damage left the creche short on usable space. The team is continually standing in faith for funding and long-term solutions to rebuild and expand classrooms.
- **Maintenance of Facilities:**  
Teachers took initiative by raising funds, repainting the fence, and laying a concrete floor under the verandah to create more usable play space.
- **ECD Registration Hurdles:**  
The property transfer to the church is still pending, delaying progress in the formal registration process.
- **Rental Property Agreements:**  
MoUs between the crèche and property owner still needed to be finalised or updated to ensure clarity on safety and maintenance responsibilities.
- **Change in Management:**  
With the principal relocating to the UK, the remaining three teachers stepped up and successfully managed the crèche through the rest of the year.

## Training and Development Initiatives

There's a shared vision to strengthen Spring of Life through collaboration with the Department of Education. As zoning and development plans unfold, the hope is to expand the grounds and provide safe, fully equipped spaces that meet the growing needs of the children and staff.





## Focus Area: Youth Development

Youth development is key to building stronger, more connected communities. Through leadership training, mentorship, life-skills support, and meaningful friendships, we're helping young people grow with confidence and hope for the future.



## Stellenbosch: Jonkershoek Aftercare Centre

At the start of the year, we added a new classroom, allowing us to welcome 20 more children, bringing daily attendance to 65 (up from 65% to 79%) over the year. In 2024, 30 volunteers supported the centre, including 25 from Stellenbosch University's Accountancy Department, helping with maths for the first time and postgraduate Psychology students who boosted children's mental health and self-care.

Shofar Christian Church hosted three outreaches and youth camps, while our weekly mentorship and youth group strengthened relationships and community outreach. Key partners like ACVV and the Anna Foundation provided vital support with social interventions and fun, innovative learning programmes in maths, literature, drama, and sports. CBN's Superbook programme enriched children's biblical learning.

We're proud that our learners' results improved, with four children recognised as the best in their class, showing that all our efforts are making a real difference.

## Stellenbosch: Jonkershoek Cycling Project

In 2024, the Jonkershoek Cycling Project grew significantly, doubling riders from 15 to 35, with more girls joining. Riders advanced from riding basics to challenging mountain trails, competing impressively in local races and marathons. The programme emphasised character development and mentoring, helping children overcome personal obstacles and improve holistically, aided by psychology interns and ethical values lessons.

A standout achievement was one rider earning a scholarship to attend Stellenbosch High School's Endurocad Academy in 2025, marking a proud milestone for the project.



## Riebeeck-Kasteel: Dream Again Mentoring



In 2024, the Dream Again Foundation continued its mission to empower girls aged 12 to 18 living on farms in the Riebeeck Valley by welcoming new members from a nearby farm near Malmesbury. Supported by committed volunteers and generous farm owners who assist with transport, the group grew to 22 girls. In 2024, the programme focused primarily on exploring the Fruit of the Spirit from Galatians 5:22, equipping the girls with tools to navigate personal growth and self-development.

The girls' love of singing and dancing was nurtured through exciting experiences like attending the Artscape Theatre's Mama Mia performance. Local dance and fitness instructors also enriched their skills with group dances, aerobic exercises, and rhythmic gymnastics, fostering fun, teamwork, and confidence.

Highlights included visits from professional storyteller Driekie Olwage and author Engela Duvenhage, adding inspiration and learning to the year's activities. To close the year, Dream Again girls joined peers from Jonkershoek Prochorus for a camp focused on self-awareness and self-love.

Dream Again remains a safe, nurturing community where girls learn their worth, integrity, and commitment, building courage and hope to create a brighter future for themselves and their farm communities. The Foundation deeply appreciates its local and international partners whose kindness and support weave a protective blanket of blessings over these "Dream Girls".



## Focus Area: Community Welfare

Community welfare is about showing up for one another, working together for the good of all. Its true strength lies in the quiet, consistent acts of kindness and compassion that connect us as people.



# De Doorns: Shining Light Project

## Background

Shining Community, founded by Vuyo Sambu, serves the impoverished De Doorns area. For over 15 years, Vuyo has passionately focused on community development, especially for children and youth, supported by her academic background in Linguistics and Leadership.

## What We Do

**We are committed to Children and Youth Development through:**

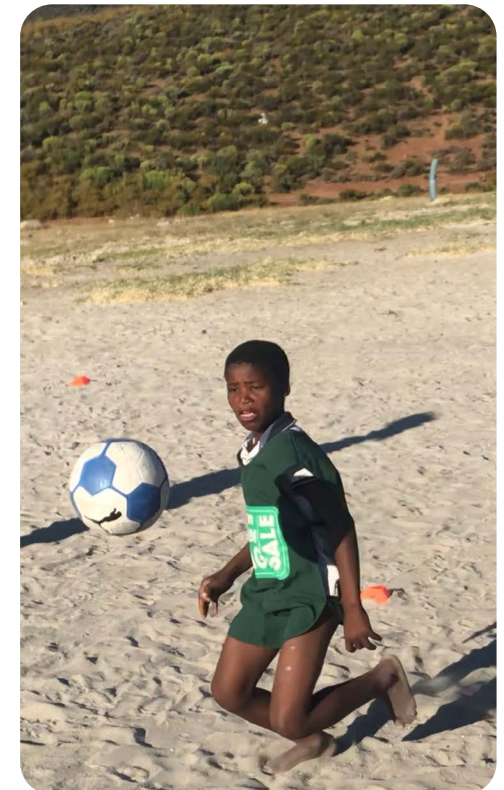
- Character Development and Curriculum Creation
- After-school Classes and Community Events
- Supporting Football and Netball Teams
- Individual Mentorship
- School Partnerships for Character Programmes
- Training New Character Teachers and Leaders

## The Challenge of Outdoor Classes and Weather Exposure

Our classes take place outdoors, exposing children to harsh weather. Despite this, their eagerness remains strong. A proper shelter would greatly improve programme consistency and impact.

## Community Challenges and Programme Benefits

De Doorns faces serious challenges such as substance abuse, crime, and violence, making it vital to invest in the growth and development of children to help break this cycle. Our programme nurtures integrity and leadership, aiming to raise future leaders who will drive national restoration and development.



# Somerset-West: Storehouse Project

## Key Accomplishments And Milestones

Through ongoing relationship-building and discipleship with displaced individuals on the streets, we have facilitated family reconciliations and supported several people in re-entering society. We are deeply grateful for the generous support from our donors, which has enabled us to extend blessings to many other organisations and individuals. Over the past year, we have strengthened partnerships with local NGOs and community groups, including:

- Goeie Hoop Children's Home, Firlands, Strand
- Inspired2Become & Christian Skaters Africa (small business development and event support)
- Shofar Christian Church
- Somerset West Family Shelter (in the form of material donations: clothes, facemasks, food, maintenance)
- Somerset West Night Shelter (acting as a bridge/mediator for displaced community members)
- POPUP Western Cape (People Upliftment Programme)
- Work-4-A-Living Centre, Somerset West
- U-Turn Homeless Centre, Strand

**These collaborations have broadened our impact, helping us serve vulnerable populations more effectively.**



## Challenges and How They Were Addressed

- **Volunteer Engagement:** Ministry exposure at Shofar Church services and a fundraising campaign were both highly successful, raising significant funds and increasing volunteer support.
- **Storage and Workspace Limitations:** With no dedicated storerooms or workspaces for sorting donations and maintenance, we are planning to rent an off-site workshop closer to our projects. Meanwhile, a small mobile workshop was established at Shofar SW to service bicycles for the Bikes-4-Neighbours initiative.

## Training and Development Initiatives

- We plan to provide the area manager with training in fundraising, finance, budgeting, and skills development to strengthen leadership capacity.
- Expanding into community skills development is a priority. The upcoming Bikes-4-Neighbours project (launching in 2025) will mentor disadvantaged individuals, provide bicycles to improve mobility, and potentially offer bike mechanic training.
- The 'Foster-a-Bag-of-Clothing' programme was introduced to outsource washing and sorting of donated clothes to church volunteers, significantly easing operational pressures and receiving positive feedback.

## Delft: Home-based Disability Care



Khanya Prochorus supported a Delft Safe House by renovating an old building to provide a safer, more comfortable home for physically challenged children, many with cerebral palsy. They also sourced a trained assistant caregiver to help the families. A bedridden woman connected to the project recovered and regained mobility thanks to weekly visits, prayer, and care from the team, who also provided food, toiletries, and cleaning supplies.

### Challenges Faced and Our Response:

Most parents are single mothers relying on limited grants, struggling to provide essentials like food, nappies, and toiletries. Khanya Prochorus began by supplying food parcels and care support, allowing mothers time for work and enabling children to attend family events they previously missed.

### Community Engagement:

The team regularly visits vulnerable community members, offering food, companionship, and spiritual support. They also joined the Shining Team in De Doorns for outreach, encouraging children through scripture, play, and gardening projects. Some children remain out of school due to missing documents, which is a growing concern.



# Focus Area: Skills Development

Helping people develop skills empowers them with more opportunities and equips them to support themselves and their families. Skills truly open the doors to a brighter future!



## Stellenbosch: ECD Training

In 2024, Prochorus catalysed a dedicated initiative supporting 28 creches in Kayamandi, positively impacting approximately 1100 children and over 30 teachers. Throughout the year, a series of well-organised trainings and gatherings addressed essential topics such as mental health for both children and educators, developmental milestones, effective staff management, and daily schedule planning.

These sessions not only enhanced the quality of care and education but also fostered collaboration and community among creche staff, strengthening the foundation for early childhood development in the area.

## Stellenbosch: Jonkershoek Bike Mechanic Skills Training

As part of our cycling development programme, we train boys in essential bicycle maintenance skills, providing hands-on practice with team bikes under the guidance of experienced riders, volunteers, and coaches. These skills are highly valuable and in demand by local bike shops, tour operators, and rental companies, offering opportunities for part-time work at multi-day cycling events that require extra maintenance support.

To expand this training and better meet servicing needs, we aim to establish a fully equipped bicycle workshop housed in a shipping container. This workshop will enable us to deliver more effective mechanical skills training while also operating a small public bike servicing business, creating sustainable benefits for both the programme and the wider community.



# Financial Matters

## Income Statement Summary

Below is a summary of our income and expenses, reflecting our financial performance for 2023 and 2024. While income increased in 2024, cross-category shifts impacted the overall surplus.

CATEGORY	SUBCATEGORY	2024 (ZAR)	2023 (ZAR)
<b>Income</b>	Donations received	2,182,934	2,181,207
	Project income	1,467,725	523,501
	Rental income	48,430	51,990
	Interest received	19,662	23,316
<b>Total Income</b>		<b>3,718,751</b>	<b>2,780,014</b>
<b>Expenses</b>	Staff expenses	1,469,130	1,650,333
	Administration costs	230,025	133,743
	Project costs	1,312,339	1,277,719
<b>Total Expenses</b>		<b>3,011,494</b>	<b>3,061,795</b>
<b>Surplus/Deficit</b>		707,257	-281,781

# Our Donors

Our heartfelt thanks go to all our donors – without your generous support, none of the meaningful work we do would be possible.

AKKERFIKELELA  
BALL PROJECT  
BSG MEMMINGEN  
CANVA  
CAPE CLASSIC FOUNDATION  
CBN/SUPERBOOK  
CLEMENGOLD FOUNDATION  
FLANDRIA BICYCLES  
FOCUS ON THE FAMILY SA  
GRANT-IN-AID  
HEROTEL  
INDIVIDUALS  
JAM (JOINT AID MANAGEMENT) SOUTH AFRICA  
LEGO FOUNDATION  
LIFETRUST  
LITTLE PRE-READERS AND READERS  
MTO

PEP FOUNDATION  
REDSTOR  
REMOTE ENTRY SYSTEMS  
RISE AGAINST HUNGER  
SHOFAR CHRISTIAN CHURCH  
SLUDGE  
SQUIRT LUBE  
STARTWELL FOUNDATION  
STELKOR PHARMACY  
STELLENBOSCH UNIVERSITY  
STILLWATER SPORTS  
TECHSOUP/MICROSOFT  
WEIDPLAS SA  
WILDEBERG & KOMPANJIE  
WINELANDS CYCLING CLUB  
WINELANDS MUNICIPALITY  
WISH INTERNET



**PROCHORUS**  
COMMUNITY DEVELOPMENT

## Thank you

Your generous donations and unwavering support have been the foundation of our work, enabling us to transform lives and uplift communities with dedication and excellence. We are deeply grateful for your partnership on this journey of hope and impact.

